



AgroSense

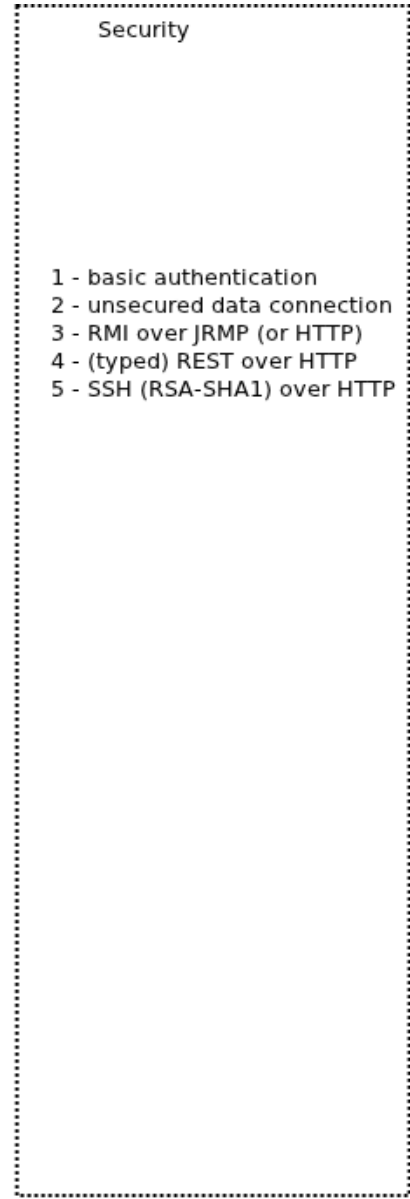
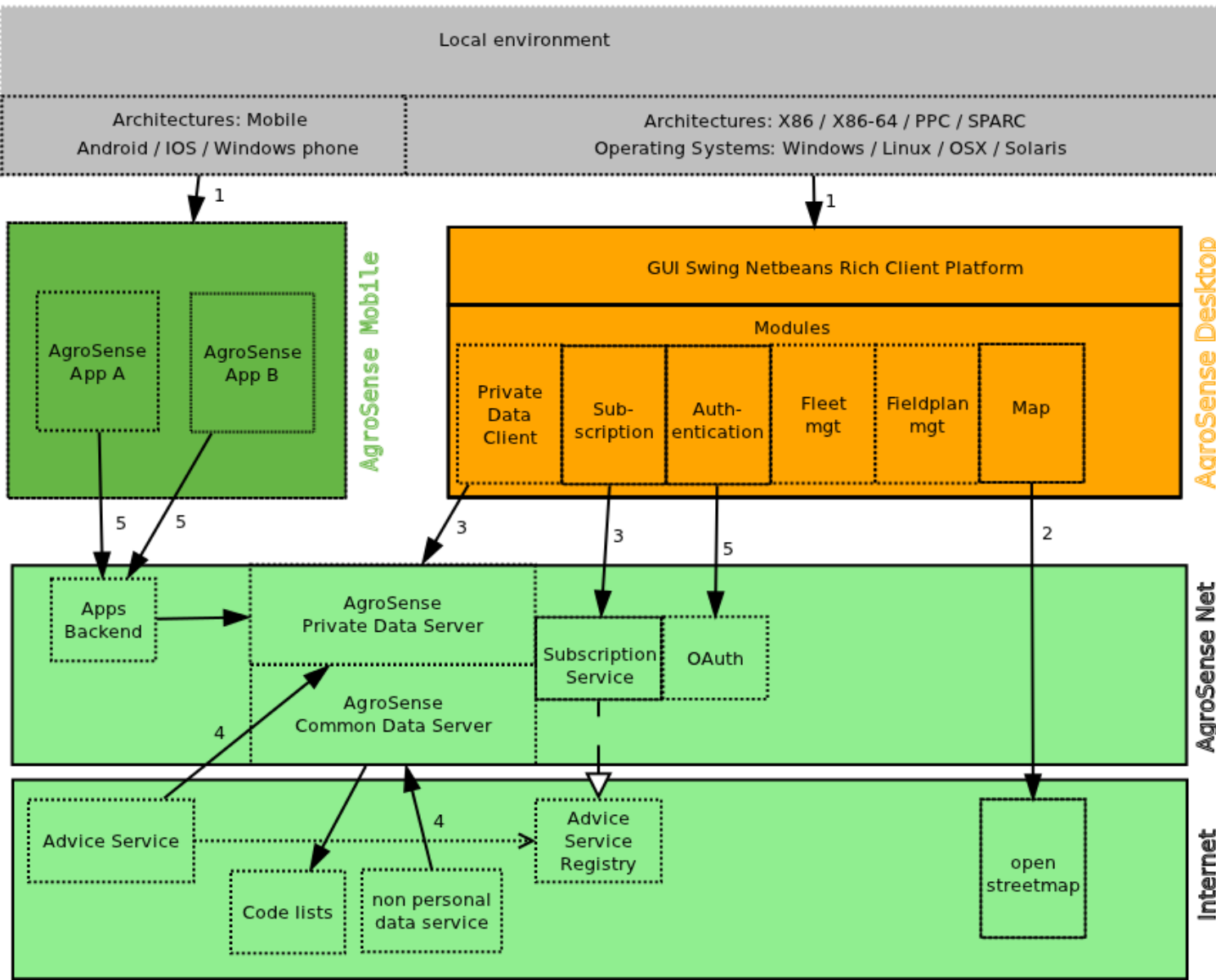
Beslissingondersteunend systeem voor de akkerbouwer

Gastcollege Fontys,

September 2012

Timon Veenstra
Nicole Bartelds

Architecture - components



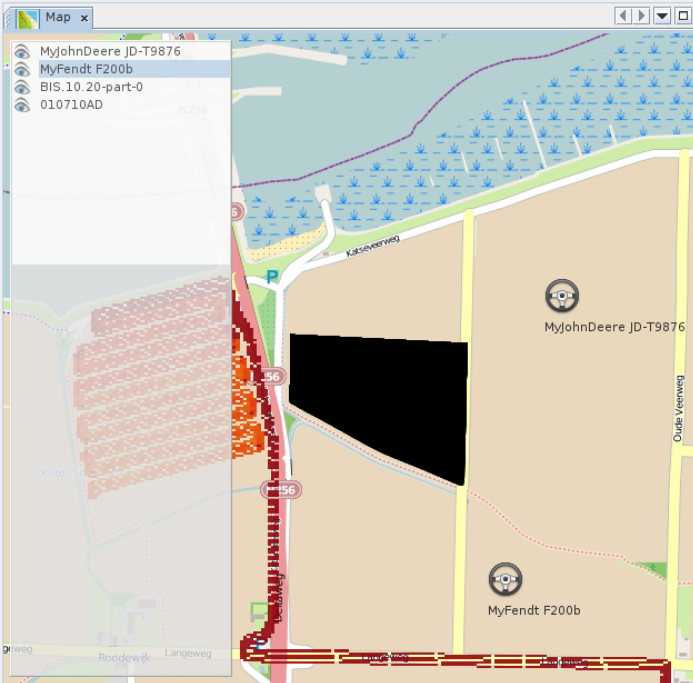
AgroSense 201112071828

File View Tools Window Help

File

Projects

- SomeFarm
 - Fields
 - Import
 - go_NethRD-RDNEW-WGS84
 - go_NethRD-RDNEW-WGS84_1
 - Fields
 - 1
 - BIS.10.20
 - BIS.50.20
 - WP.10.20
 - Cropfields
 - BIS.10.20-part-0
 - BIS.10.20-part-1
 - BIS.10.20
 - Fleet
 - Implements
 - Vehicles
 - MyJohnDeere JD-T9876
 - MyFendt F200b
 - Isobus
 - Production units
 - Potatos Nedato
 - BIS.10.20-part-1
 - BIS.10.20-part-0
 - Sensor
 - 010710AA
 - 010710AB
 - 010710AC
 - 010710AD
 - Stock



BIS.10.20 x 010710AD.CSV x

Visual Source

```

LONGITUDE, LATITUDE, FIX_TYPE, UTC_TIME, SPEED, COURSE
0003.8611688, 0051.5340415, 4, 075310.08, 3.1, 358.9, 1
0003.8612632, 0051.5340433, 4, 075310.08, 3.1, 358.9, 2
0003.8613440, 0051.5340449, 4, 075310.08, 3.1, 358.9, 3
0003.8614384, 0051.5340467, 4, 075310.08, 3.1, 358.9, 4
0003.8611705, 0051.5340498, 4, 075311.08, 3.1, 356.3, 1
0003.8612648, 0051.5340559, 4, 075311.08, 3.1, 356.3, 2
0003.8613455, 0051.5340611, 4, 075311.08, 3.1, 356.3, 3
0003.8614397, 0051.5340672, 4, 075311.08, 3.1, 356.3, 4
0003.8611710, 0051.5340687, 4, 075312.08, 3.1, 353.8, 1
0003.8612649, 0051.5340689, 4, 075312.08, 3.1, 353.8, 2
0003.8613453, 0051.5340776, 4, 075312.08, 3.1, 353.8, 3
0003.8614392, 0051.5340878, 4, 075312.08, 3.1, 353.8, 4
0003.8611707, 0051.5340689, 4, 075313.08, 3.3, 351.7, 1
0003.8612641, 0051.5340826, 4, 075313.08, 3.3, 351.7, 2
0003.8613441, 0051.5340942, 4, 075313.08, 3.3, 351.7, 3
0003.8614376, 0051.5341079, 4, 075313.08, 3.3, 351.7, 4
0003.8611688, 0051.5340814, 4, 075314.08, 3.6, 350.2, 1
0003.8612618, 0051.5340974, 4, 075314.08, 3.6, 350.2, 2
0003.8613415, 0051.5341112, 4, 075314.08, 3.6, 350.2, 3
0003.8614346, 0051.5341273, 4, 075314.08, 3.6, 350.2, 4
0003.8611636, 0051.5340974, 4, 075315.08, 3.6, 350.1, 1
0003.8612566, 0051.5341137, 4, 075315.08, 3.6, 350.1, 2
0003.8613362, 0051.5341276, 4, 075315.08, 3.6, 350.1, 3
0003.8614293, 0051.5341438, 4, 075315.08, 3.6, 350.1, 4
0003.8611577, 0051.5341141, 4, 075316.08, 3.5, 350.4, 1
0003.8612508, 0051.5341299, 4, 075316.08, 3.5, 350.4, 2
0003.8613305, 0051.5341434, 4, 075316.08, 3.5, 350.4, 3
0003.8614236, 0051.5341591, 4, 075316.08, 3.5, 350.4, 4
0003.8611523, 0051.5341317, 4, 075317.08, 3.5, 351.0, 1
0003.8612456, 0051.5341464, 4, 075317.08, 3.5, 351.0, 2
0003.8613255, 0051.5341591, 4, 075317.08, 3.5, 351.0, 3
0003.8614187, 0051.5341739, 4, 075317.08, 3.5, 351.0, 4
0003.8611460, 0051.5341519, 4, 075318.08, 3.3, 353.3, 1
0003.8612398, 0051.5341630, 4, 075318.08, 3.3, 353.3, 2
0003.8613201, 0051.5341724, 4, 075318.08, 3.3, 353.3, 3
    
```

BIS.50.20 x

Data Visual

Field data

Name:

Validity:

Surface:

Crop list x

Overview Crop list

Crop list

	name	source
☑	Corn	Dummy
☑	Classifications	
☑	Varieties	
☑	Variety 1	Variety 1
☐		Unknown

BIS.10.20-part-0 x

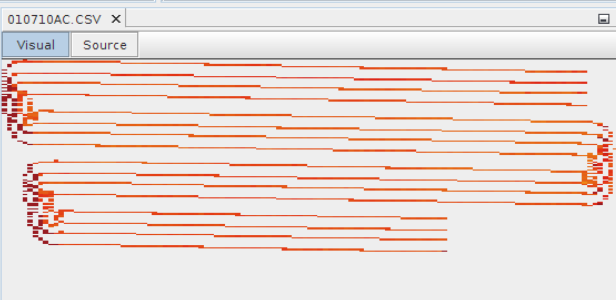
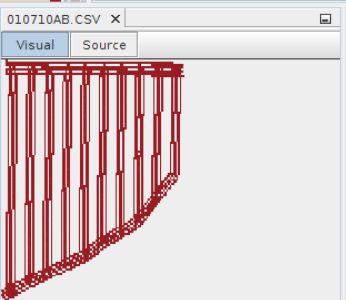
Visual

Crop field visual preview

Log Window x

```

[Info] Start processing of ASC-340 Cropcircle sensor file 010710AA
[Info] 12 sensorlines successfully processed
[Info] Start processing of ASC-340 Cropcircle sensor file 010710AB
[Info] 11.156 sensorlines successfully processed
[Info] Start processing of ASC-340 Cropcircle sensor file 010710AD
[Info] 13.444 sensorlines successfully processed
[Info] Start processing of ASC-340 Cropcircle sensor file 010710AC
[Info] 3.072 sensorlines successfully processed
    
```



geoviewer-jxmap - NetBeans IDE 7.2

File Edit View Navigate Source Refactor Run Debug Profile Team Tools Window Help

Search (Ctrl+I)

Projects | Files | Services

- cloudfarming-eventbus NetBeans Module
- field-shape-type
- fleet
- fleet-gpssimulator
- fleet-gpstrackerexample
- fleet-implement
- fleet-machine
- fleet-model
- fleet-project
- fleet-vehicle
- geoviewer
- geoviewer-api
- geoviewer-jxmap
 - Source Packages
 - nl.cloudfarming.client.geoviewer.jxmap
 - MapDataManager.java
 - MapView.java
 - MapViewAction.java
 - MapViewTopComponent.java**
 - Module.java
 - nl.cloudfarming.client.geoviewer.jxmap.docs
 - nl.cloudfarming.client.geoviewer.jxmap.layerlist
 - nl.cloudfarming.client.geoviewer.jxmap.map

MapViewerTopComponent.java - Navigator

Members View

- MapViewerTopComponent :: TopComponent : Provider
 - MapViewerTopComponent()
 - componentActivated()
 - componentDeactivated()
 - componentOpened()
 - findInstance() : MapViewerTopComponent
 - getDefault() : MapViewerTopComponent
 - getExplorerManager() : ExplorerManager
 - getMapDataManager() : MapDataManager
 - getPersistenceType() : int
 - initComponents()
 - preferredID() : String
 - readProperties(Properties p) : Object
 - readPropertiesImpl(Properties p)
 - writeProperties(Properties p)
 - ICON_PATH : String
 - PREFERRED_ID : String
 - instance : MapViewerTopComponent
 - mapDataManager : MapDataManager
 - mapView : MapView

Start Page | pom.xml [isomatch-parent] | pom.xml [isomatch-app] | MapViewerTopComponent.java x

Source | History

```
40 * , position = 333
41 */)
42 @TopComponent.OpenActionRegistration(displayName = "#CTL_MapViewerAction",
43 preferredID = "MapViewTopComponent")
44 @NbBundle.Messages({
45     "CTL_MapViewerAction=Map",
46     "CTL_MapViewerTopComponent=Map Window",
47     "HINT_MapViewerTopComponent=This is a Map window"
48 })
49 public final class MapViewerTopComponent extends TopComponent implements ExplorerManager.Provider {
50
51     private static MapViewerTopComponent instance;
52     /** path to the icon used by the component and its open action */
53     static final String ICON_PATH = "nl/cloudfarming/client/icon/map-icon24.png";
54     private static final String PREFERRED_ID = "MapViewTopComponent";
55     private final MapDataManager mapDataManager = new MapDataManager();
56     private final MapView mapView = new MapView();
57
58     public MapViewerTopComponent() {
59         initComponents();
60         setName(NbBundle.getMessage(MapViewerTopComponent.class, "CTL_MapViewerTopComponent"));
61         setToolTipText(NbBundle.getMessage(MapViewerTopComponent.class, "HINT_MapViewerTopComponent"));
62
63         setIcon(ImageUtilities.loadImage(ICON_PATH, true));
64         associateLookup(mapView.getLookup());
65     }
66
67
68     /** This method is called from within the constructor to
69     * initialize the form.
70     */
```

Usages | Output | Exception Reporter

Further information



AgroSense project:

<http://agrosense.java.net>

<http://www.agrosense.nl>

NetBeans:

<http://netbeans.org/features/platform/>

<http://netbeans.dzone.com/>

Irc: irc.freenode.net #netbeans

Speaker:

@TimonVeenstra

monezz@gmail.com